



Retrofit and refurbishment of process plants in the semiconductor industry

GEMÜ PC50 iComLine valve block solutions for retrofit/refurbishment applications.

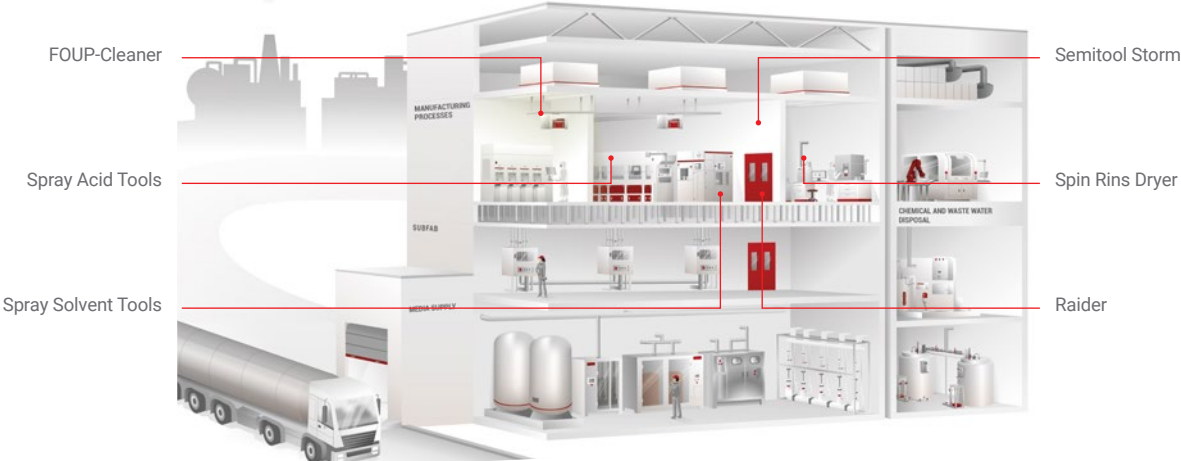
GEMÜ has excellent references for the use of valve components in areas of application where the semiconductor industry imposes stringent purity requirements on its suppliers. Our valves, measurement and control systems are used in the process area during semiconductor production, among other applications. GEMÜ has made a name for itself with retrofit and refurbishment applications in particular.

Importance of retrofits in the semiconductor industry

- Retrofitting/refurbishing process plants refers to maintenance and optimization of existing equipment in semiconductor factories

- Operators use this to be able to avoid the cost-intensive procurement of complete new plants
- As part of the maintenance cycles, operators must regularly replace various components and assemblies with spare parts
- Some of the manufacturers of these processing devices, such as SEZ, FSI and Semitool, are no longer active and therefore do not provide spare parts or maintenance services
- The valves, measurement and control systems used are particularly affected by the lack of maintenance and a supply of spare parts

Process tools from Semitool, which are used in semiconductor production



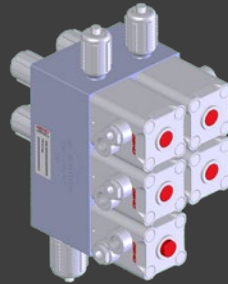
Quick and easy maintenance with GEMÜ

- Inspection of the plant by a trained external sales team in order to record flow charts, dimensions and the mounting types of the valve components that are to be replaced
- Customer-specific design of multi-port valve blocks
- Quick and straightforward replacement of spare parts
- Minimal plant downtimes

Examples for spare part designs

GEMÜ solution

Semitool "Raider Block" for electrochemical multi-chamber coating systems



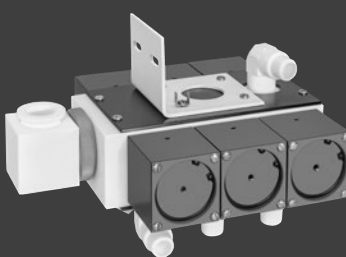
- Compact design
- Conductive block material (CPTFE)
- Mounting option in existing plant

Semitool "Spray Solvent Tool" for wafer cleaning processes using solvents and DI water



- Compact design
- Conductive block material (CPTFE)
- Mounting in and connection to the existing plant

Semitool "Spray Acid Tool" for lithographic processes



- Compact design
- Special connection to the chemical tank
- Integration of mounting plate