

## Solenoid valve, Metal

### Construction

The 4/2 way compact indirectly controlled valve with aluminium body, piston slide valve and detachable coil encapsulated in plastic has got a T-ring piston slide valve with soft seal. It is servo assisted. The electrical connection is made via a plug to DIN EN 175301-803 form A.

### Features

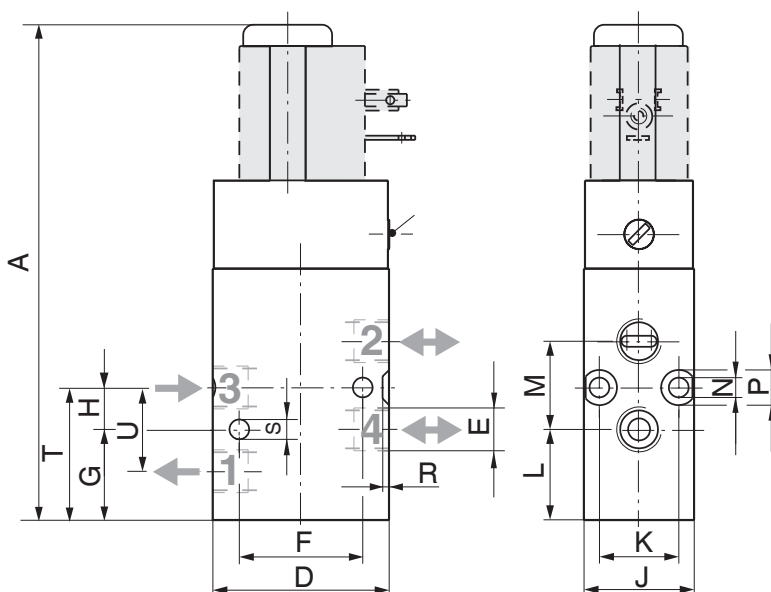
- Filtered, lubricated or oil-free compressed air is a suitable working medium
- The valve is suitable for the control of double acting pneumatic cylinders and diaphragm actuators or other pneumatic actuators
- In order to achieve the maximum possible reliability and service life it is advisable to prepare the working medium using a lubricator and filter regulator

### Advantages

- Optional mounting position
- Standard manual override
- Battery mounting with common air inlet is possible
- The coil can be replaced without removing the valve body from the pipeline
- Technically advanced and proven construction



Body dimensions GEMÜ 8505 [inch]



DN	A	D	E	F	G	H	J	K
4	4.43	1.57	G 1/8	1.1	0.81	0.37	0.98	0.71
7	5.02	2.17	G 1/4	1.26	1.12	0.47	1.18	0.91
	L	M	ØN	ØP	R	ØS	T	U
4	0.81	0.79	0.18	0.31	0.08	0.18	1.18	0.75
7	1.12	0.94	0.18	-	-	0.22	1.59	1.14

## Technical data

### Working medium

Filtered, lubricated or unlubricated compressed air which has no negative impact on the physical and chemical properties of the body and seal material.

Perm. temp. of working medium 14 °F to 122 °F  
 Min. differential pressure  $\Delta P$  15 psi

### Protection class

IP 65 Ex version upon request

### Rating

Continuously rated

### Switching time

DN 4 approx. 20 ms

DN 7 approx. 27 ms

### Power consumption

#### A.C. operation:

DN 4 (solenoid 3052) 8.5 VA  
 DN 7 (solenoid 3033) 4.9 VA

#### D.C. operation:

DN 4 (solenoid 3052) 4.8 W  
 DN 7 (solenoid 3033) 2.7 W

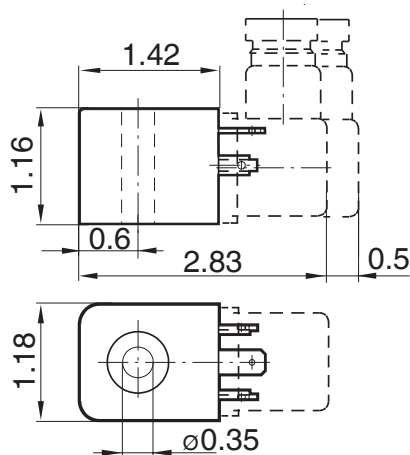
Nominal size	Plug size	Operating pressure	$C_v$ value	Weight
DN	DIN EN 175301-803	[psi]	[gpm]	[lbs]
4	Design B (GEMÜ 3052)	22 - 150	49.14	0.7
7	Design A (GEMÜ 3033)	15 - 150	98.28	0.9

### Wiring note:

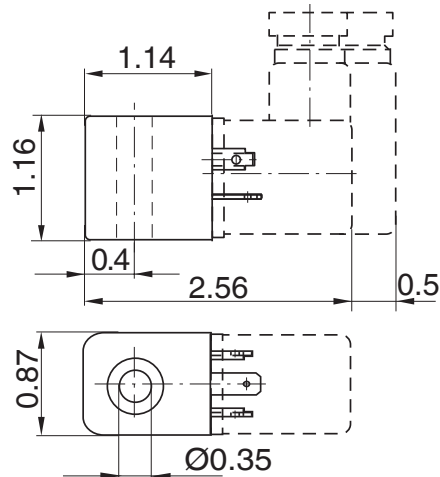
Special wiring on request. When using electronic switches and additional wiring, carefully design out any potential residual currents upon installation.

## Operating solenoids with plug to DIN EN 175301-803, Designs A and B

DN 4 / 3052 / Design B



DN 7 / 3033 / Design A



Solenoid order no.	Power consumption		Protection class
	24 V DC	24 V AC (50 Hz)	
3033 (design A)	2.7 W	4.9 VA	IP 65
3052 (design B)	4.8 W	8.5 VA	

## Order data

Body configuration	Code
Multi-way	M

Supply voltage	Code
24 V	24
110 V	110
230 V	230

Connection	Code
Threaded sockets DIN ISO 228	1

Valve body material	Code
Aluminium (Al)	14

Mains frequency	Code
50 Hz	50
DC	DC

Seal material	Code
Perbunan (NBR)	2

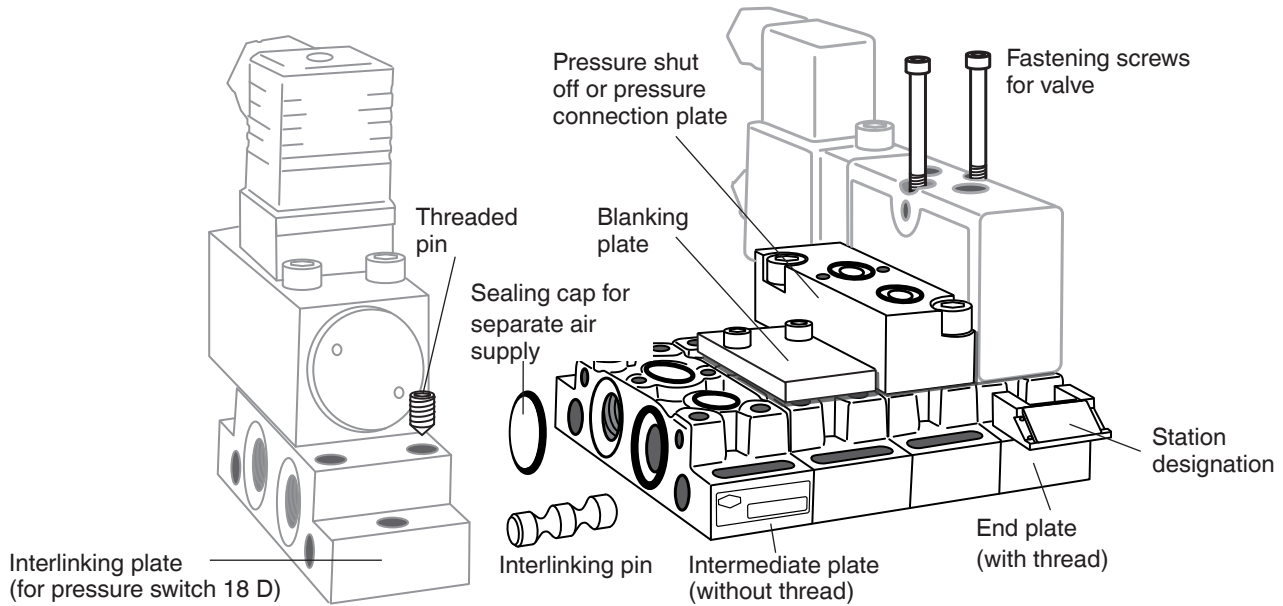
Operating/Reset	Code
Solenoid / Air spring	1

### Voltage / Frequency availability

<b>AC voltage</b>	24 V AC, 110 V AC, 230 V AC	50 Hz
<b>DC voltage</b>	24 V DC, 110 V DC	-
Further voltages and ex-solenoids upon request.		

Order example	8505	4	M	1	14	2	1	230	50
Type	8505								
Nominal size		4							
Body configuration (code)			M						
Connection (code)				1					
Valve body material (code)					14				
Seal material (code)						2			
Operating/Reset (code)							1		
Voltage (code)								230	
Frequency (code)									50

## Interlinking system



### Parameters (interlinking without valves)

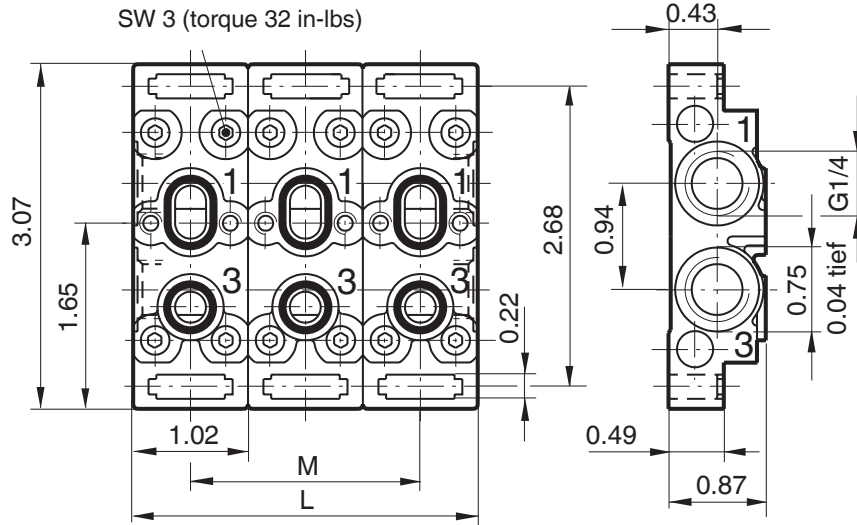
Designation	DN 4		DN 7	
	Weight [lbs]	Order no.	Weight [lbs]	Order no.
End plate complete (with thread)	0.2	0559984	0.3	0559986
Intermediate plate complete (without thread)	0.2	0559985	0.3	0559987
Interlinking plate complete (for pressure switch 18D)	0.2	0540937	0.4	0540909
Pressure shut-off plate complete (for valve mounting when pressure is applied)	0.2	0541502	0.3	0541461
Pressure connection plate complete (for separate air supply)	0.2	0541505	0.3	0542940
Interlinking for 2 valves	0.4	2629202	0.7	2629402
Interlinking for 3 valves	0.6	2629203	1.1	2629403
Interlinking for 4 valves	0.8	2629204	1.4	2629404
Interlinking for 5 valves	1.0	2629205	1.8	2629405
Interlinking for 6 valves	1.2	2629206	2.2	2629406
Interlinking for 7 valves	1.5	2629207	2.5	2629407
Interlinking for 8 valves	1.6	2629208	2.9	2629408
Interlinking for 9 valves	1.9	2629209	3.3	2629409
Interlinking for 10 valves	2.1	2629210	3.6	2629410
Interlinking for 11 valves	2.3	2629211	4.0	2629411
Interlinking for 12 valves	2.5	2629212	4.4	2629412
Blanking plate complete	0.02	0540038	0.04	0540527
Threaded plug	0.02	0565449	0.04	0701192
Seal for threaded plug	-	0660835	-	0700835
Sealing plug (for separate air supply)	-	0540594	-	0540526

The interlinking plates are available as single plates (unassembled) and as multiple interlinking plates (assembled). Fastening screws for valves are included with the interlinking plates. Single rail for pressure supply upon request

Order example	Order no..
a) Interlinking for 3 valves (assembled)	<b>2629403</b>
b) 2 end plates. 2x	<b>0559986</b>
1 intermediate plate (unassembled)	<b>0559987</b>

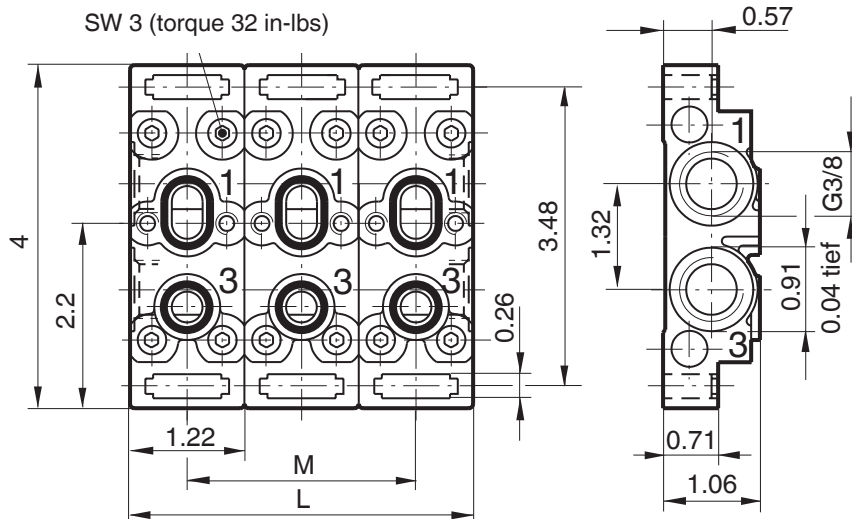
**Dimensions [inch]**

**Interlinking system DN 4**



Order no.	for n-valves	L	M	Order no.	for n-valves	L	M
0559984	1	1.02	-	2629207	7	7.17	6.14
0559985	1	1.02	-	2629208	8	8.19	7.17
2629202	2	2.05	1.02	2629209	9	9.21	8.19
2629203	3	3.07	2.05	2629210	10	10.24	9.21
2629204	4	4.09	3.07	2629211	11	11.26	10.24
2629205	5	5.12	4.09	2629212	12	12.28	11.26
2629206	6	6.14	5.12				

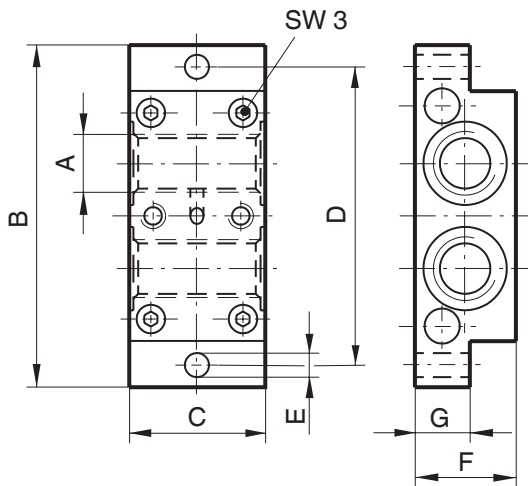
**Interlinking system DN 7**



Order no.	for n-valves	L	M	Order no.	for n-valves	L	M
0559986	1	1.22	-	2629407	7	8.54	7.32
0559987	1	1.22	-	2629408	8	9.76	8.54
2629402	2	2.44	1.22	2629409	9	10.98	9.76
2629403	3	3.66	2.44	2629410	10	12.20	10.98
2629404	4	4.88	3.66	2629411	11	13.43	12.20
2629405	5	6.10	4.88	2629412	12	14.65	13.43
2629406	6	7.32	6.10				

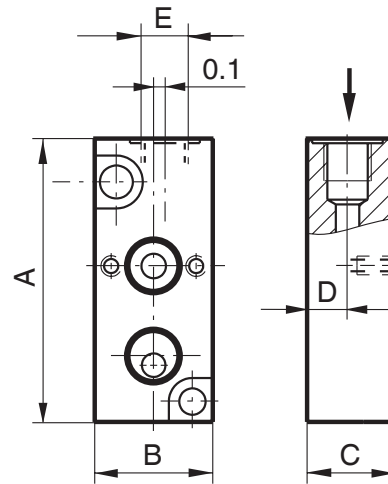
## Dimensions [inch]

### Pressure connection plate 18D



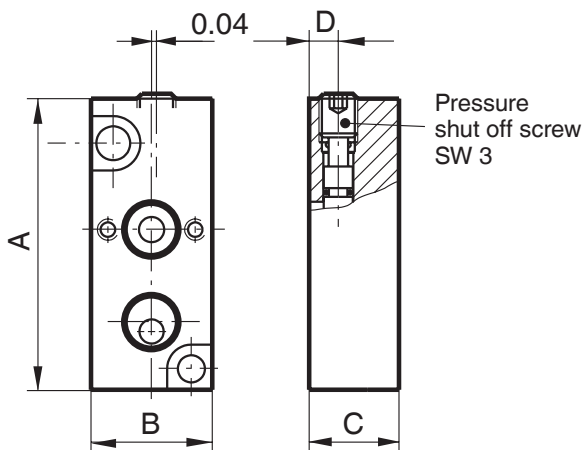
Order no.	A	B	C	D	E	F	G
0540937	G 1/4	3.07	1.22	2.68	0.22	0.91	0.49
0540909	G 3/8	3.98	1.22	3.46	0.28	1.10	0.71

### Pressure connection plate



Order no.	DN	A	B	C	D	E
0541505	4	2.36	0.98	0.73	0.33	G 1/8
0542940	7	3.05	1.18	0.94	0.47	G 1/4

### Pressure shut-off plate



Order no.	DN	A	B	C	D
0541502	4	2.36	0.98	0.73	0.24
0541461	7	3.05	1.18	0.94	0.47

### Further pilot valves, metal



**GEMÜ 8303**  
3/2-way metal pilot valve,  
directly controlled,  
brass or stainless steel,  
DN 2 (15 - 150 psi)

**GEMÜ 8357**  
3/2-way metal pilot valve,  
servo assisted,  
aluminium  
DN 6 (15 - 150 psi)



**GEMÜ 8506**  
3/2 and 5/2 metal pilot valve,  
servo assisted,  
aluminium  
DN 6 (30 - 120 psi)

For further metal solenoid valves, accessories and other products, please see our Product Range catalogue and Price List. Contact GEMÜ.

**GEMÜ®** VALVES, MEASUREMENT  
AND CONTROL SYSTEMS

