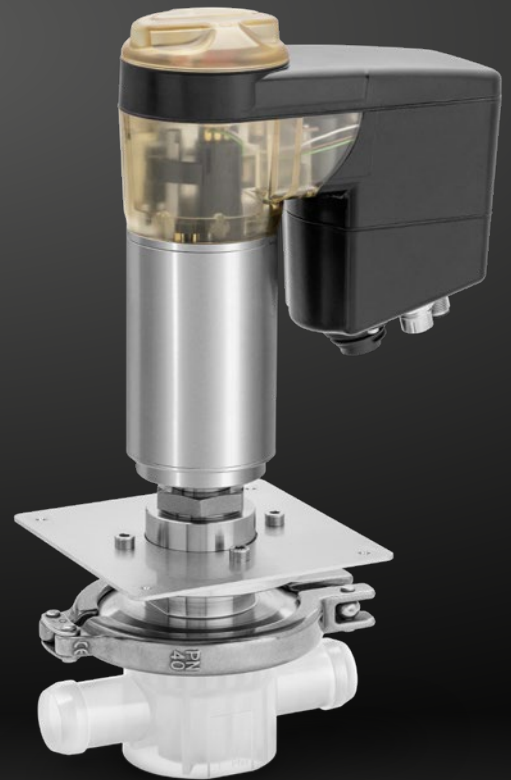




GEMÜ SU40 SUMONDO



GEMÜ SUHK SUMONDO



GEMÜ SU60 SUMONDO

Diaphragm Valve for Single-Use Applications GEMÜ SUMONDO

Areas of application

- Media mixing
- Fermentation
- Cell harvesting
- Purification
- Filtration
- Filling

Features

- Choice of manual, pneumatic or motorized actuator version
- Integral optical position indicator
- Mechanically stable, corrosion-resistant and gamma-sterilizable valve body material
- Hermetic separation between valve body and actuator
- Validation Guide optionally available
- Wide range of adaptation options for add-on components and accessories

The GEMÜ SUMONDO system

The single-use GEMÜ SUMONDO valve comprises the GEMÜ SUB diaphragm valve body, which can be combined with a manual, pneumatic or motorized actuator. The actuator is joined to the media wetted GEMÜ SUB unit, comprising a valve body and welded sealing diaphragm, by means of a clamp connection. After use, the media wetted GEMÜ SUB unit can easily be disconnected from the actuator and replaced. The actuator remains in the plant.

GEMÜ SUHK SUMONDO

- Manual actuator version
- Autoclavable actuator
- Continuous minimum flow regulation thanks to closing stroke limiter

GEMÜ SU40 SUMONDO

- Pneumatic actuator version
- Autoclavable actuator
- Tried and tested, reliable actuator design

GEMÜ SU60 SUMONDO

- Motorized actuator version
- Open/close function, positioner and process controller
- Actuation force and actuating speed variably adjustable

GEMÜ SUB SUMONDO

- Choice of straight through, angle or T valve body version
- Mechanically stable, gamma-sterilizable valve body materials
- Valve body manufactured and packaged in ISO class 8 cleanroom

