

Specification M-block globe valve GEMÜ P500M

Customer/Project _____

Contact person _____

Date _____

Phone _____

Contact person (GEMÜ) _____

E-mail _____

TAG number _____

Medium 1:

Operating pressure 1: min: norm.: max: bar(g)

Media temperature 1: min: norm.: max: °C

Medium 2:

Operating pressure 2: min: norm.: max: bar(g)

Media temperature 2: min: norm.: max: °C

Ambient temperature: min: norm.: max: °C

Body material:

1.4435 (316L), block material (code 41)

1.4539, block material (code 44)

Other

Seal material:

PTFE (code 5)

PTFE, glass fibre reinforced (code 5G)

Other

Special requirements:

Certificates

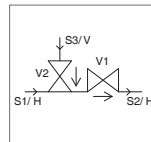
Surface roughness

Fixing

Optimized draining

Other

Example:



Please draw functional diagram.

Important: Please ensure that the table and functional diagram correspond.

Valve seat: V1, V2, ...

Spigot: S1, S2, ...

Preferred installation position: Horizontal/Vertical

Flow direction (medium):

Valve seat:

Batch size [pc]:

Annual demand [pc]:

Price:

Connection + operation:

Connection			Valve seat	Actuator			Other
Spigot no.	DN	Code	Seat no.	Actuator type	Control function	Kv value	Comment/accessories/measurement device
S1			V1				
S2			V2				
S3			V3				
S4			V4				
S5			V5				
S6			V6				
S7			V7				
S8			V8				
S9			V9				
S10			V10				

If you require a version with regulating cones, please also complete the specification sheet for the design of regulating cones.

https://sp.gemu.biz/gemuepedia/Produktdokumentation/Spezifikationsformulare/spec_globe_valves_en.pdf

The technical details of each enquiry must be checked by GEMÜ.

Please complete and send this form to your contact person at GEMÜ or to isv@gemu.de.