

Specification | GEMÜ PC50 iComLine M-block diaphragm globe valve for ultra pure applications

Customer/Project _____

Contact person _____

Date _____

Phone _____

Contact person (GEMÜ) _____

E-mail _____

Medium: _____

Application: _____

Operating pressure: _____ bar

Media temp.: _____ °C

Concentration: _____ %

Cleaning medium, if applicable: _____

Valve block material: _____

mod. PTFE (TFM™) _____

PTFE _____

PVDF _____

PP-H _____


Other _____

Diaphragm material: _____

PTFE (TFM™) _____

Block type: _____

Single block 

Double block 

Manifold 

Multi-port 

Fixing: _____

Tab _____

Through bolt _____

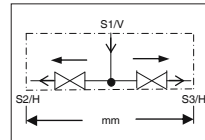
Thread _____

Other _____

Quantity: _____

Example:

Please draw functional diagram.



Important: Please ensure that the table and functional diagram correspond to one another.

Spigots:

S1, S2, ...

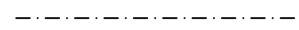
Preferred installation position:

Horizontal/Vertical

Flow direction (medium):



Max. installation space:



Valve seat:



Intersection:



Blockbezeichnung:

Version:

Spigot	Connection				Kv m³/h	Actuator				Other Remarks
	Spigot no.	DN	Flare	Thread		Other	Nr.	Actuator type ¹⁾	Control function ²⁾	
S1										
S2										
S3										
S4										
S5										
S6										
S7										
S8										
S9										
S10										

¹⁾ GEMÜ C50, C51 oder C57 iComLine, ²⁾ NC, NO, DA, ³⁾ A seats, B seats